

# DRUM CONTENTS

VEHICLE MAKE	PAGE #	VEHICLE MAKE	PAGE #
BMW	140	LEYLAND	148
CHRYSLER	140	MAZDA	149
DAEWOO	141	MAZDA COMMERCIAL	149
DAIHATSU	141	MITSUBISHI	149
DAIHATSU COMMERCIAL	141	MITSUBISHI COMMERCIAL	150
FORD	142	NISSAN	151
FORD COMMERCIAL	143	NISSAN COMMERCIAL	152
HOLDEN	145	PORSCHE	153
HOLDEN COMMERCIAL	146	ROVER	153
HONDA	146	SUZUKI	153
HYUNDAI	147	TOYOTA	154
JEEP	147	TOYOTA COMMERCIAL	155
KIA	148	VOLKSWAGEN	158
LANDROVER	148		

#### GENERAL DISCLAIMER

Important Disclaimer: Certain information in this Catalogue has been compiled from data published by original equipment manufacturers. Disc Brakes Australia Pty Ltd is unable to warrant the accuracy of third party data, and does not accept responsibility for loss or damage of any kind caused as a result of such data being inaccurate. We also encourage you to contact DBA if you have any concerns about the information provided. We will make every effort to correct any errors once they are brought to our attention.

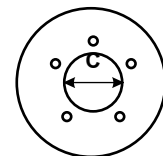
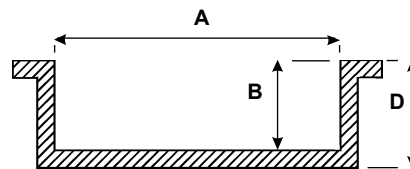
#### TRADEMARKS

DBA, 4000 series, 5000 series Kangaroo Paw, TSP, Thermal Stability Profiling, DBA XS, ALUMALITE logos are either registered or trademarks of Disc Brakes Australia Pty Ltd.

#### COPYRIGHT © DISC BRAKES AUSTRALIA

This work is copyright. You may display this material in unaltered form only (retaining this notice) for your use within your organisation. All other rights are reserved. Requests and inquiries concerning reproduction and rights should be addressed to DBA - PO Box 6666, Silverwater DC, NSW, 1811, Australia; or by e-mail [info@dba.com.au](mailto:info@dba.com.au)

# DRUM BRAKES



E = Max. Diameter

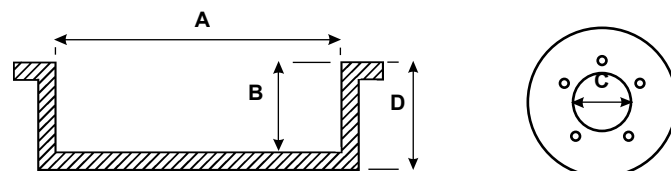
## BMW

Model	Years	F/R	Drum No.	Brake Shoe	Dia. Face A	Machine Face B	Centre Hole C	Drum Height D	Max. Diam. E	Stud Holes
1502 1600, 1602 E10 1802, 1802T E10 2002 Cabrio, Ti, E10 2002 Touring, Tii	1975 - 77 1967 - 73 1971 - 75 1969 - 75 1969 - 75	R	<b>1800</b>	E1462 Shoes	230	47	58	59	231	4
1800 E10 2000 E10 2002 Turbo E10 318, 318 i, 320 i E21 320/4, 320/6 E21	1963 - 67 1966 - 69 1973 - 75 1976 - 82 1976 - 82	R	<b>1801</b>	E1461 Shoes	250	47	58	63.5	251	4
2800 CS E3 520 i E12 518, 518 i, 520/4 E12 520/6 E12	1968 - 71 1968 - 71 1972 - 79 1977 - 6/81	R	<b>1802</b>	E1461 Shoes	250	47	75	63.5	251	5
316 i, 318 i E30	1982 - 91	R	<b>1803</b>	E1354/1	228.5	57	62	59	229.5	4
316 i, 318 i E36	9/90 on	R	<b>1804</b>	E1354/1	228.5	47	75	59	229.5	5

## CHRYSLER

Model	Years	F/R	Drum No.	Brake Shoe	Dia. Face A	Machine Face B	Centre Hole C	Drum Height D	Max. Diam. E	Stud Holes
Valiant VH, VJ, VK, CH, CJ, CK, CL	1972 - 78	R	<b>1720</b>	Large Centre Hole E1264 Shoes	228.6	54	71.5	73	229.6	5
Neon		R	<b>1721</b>		200	39	57.5	60.5	201	5
Voyager		R	<b>1722</b>	E1756	250	65	72	78	251	5

# DRUM BRAKES



E = Max. Diameter

## DAEWOO

Model	Years	F/R	Drum No.	Brake Shoe	Dia. Face A	Machine Face B	Centre Hole C	Drum Height D	Max. Diam. E	Stud Holes
Cielo, Lanos, Espero, Nubria	2/95 on	R	<b>1680</b>	E1710	200	53	57	67	201	4

## DAIHATSU

Model	Years	F/R	Drum No.	Brake Shoe	Dia. Face A	Machine Face B	Centre Hole C	Drum Height D	Max. Diam. E	Stud Holes
-------	-------	-----	----------	------------	-------------	----------------	---------------	---------------	--------------	------------

### CHARADE

G100	1/87 - 94	R	<b>1690</b>	E1658	180	36	HUB TYPE	72.5	181	4
G102	1/90 - 93									
G200, G202, G203	1/89 on									
G102	1/90 - 93	R	<b>1691</b>	E1682	200	41	56	56.5	201	4

### MIRA

L200, L201	1990 on	R	<b>1692</b>	E1688	228	60	67	69	230.6	5
------------	---------	---	-------------	-------	-----	----	----	----	-------	---

### MOVE

L601	1997 on	R	<b>1692</b>		228	60	67	69	230.6	5
------	---------	---	-------------	--	-----	----	----	----	-------	---

### TERIOS

5 DR Sedan	1997 on	R	<b>1693</b>	E1747	228.6	53.5	66.5	69	230	5
------------	---------	---	-------------	-------	-------	------	------	----	-----	---

## DAIHATSU COMMERCIAL

Model	Years	F/R	Drum No.	Brake Shoe	Dia. Face A	Machine Face B	Centre Hole C	Drum Height D	Max. Diam. E	Stud Holes
-------	-------	-----	----------	------------	-------------	----------------	---------------	---------------	--------------	------------

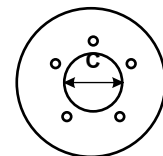
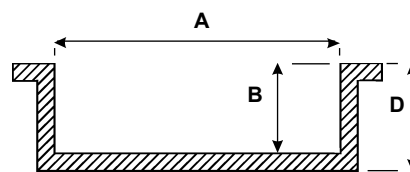
### ROCKY

Turbo & Non Turbo	1984 on	R	<b>1694</b>	E1607	254	52	107	66	255	5
-------------------	---------	---	-------------	-------	-----	----	-----	----	-----	---

### FEROSA

F300, F301	1988 on	R	<b>1694</b>	E1607	254	52	107	66	255	5
------------	---------	---	-------------	-------	-----	----	-----	----	-----	---

# DRUM BRAKES



E = Max. Diameter

## FORD

Model	Years	F/R	Drum No.	Brake Shoe	Dia. Face A	Machine Face B	Centre Hole C	Drum Height D	Max. Diam. E	Stud Holes
-------	-------	-----	----------	------------	-------------	----------------	---------------	---------------	--------------	------------

### CORSAIR

UA	1989 - 92	R	<b>1700</b>	E1656	228.6	54	68	67	229.5	4
----	-----------	---	-------------	-------	-------	----	----	----	-------	---

### FALCON

XB, XC, XD, XE, XF	10/75 - 86	R	<b>1610</b>	E1271 Shoes	10"	2 <sup>23</sup> / <sub>16</sub> "	2 <sup>3</sup> / <sub>4</sub> "	2 <sup>11</sup> / <sub>16</sub> "	10.060"	5
					or 254	or 55	or 70	or 68.5	or 255.5	

### FAIRLANE

Fairlane ZG, ZH, ZJ	10/75 - 81	R	<b>1610</b>	E1271 Shoes	10"	2 <sup>23</sup> / <sub>16</sub> "	2 <sup>3</sup> / <sub>4</sub> "	2 <sup>11</sup> / <sub>16</sub> "	10.060"	5
					or 254	or 55	or 70	or 68.5	or 255.5	

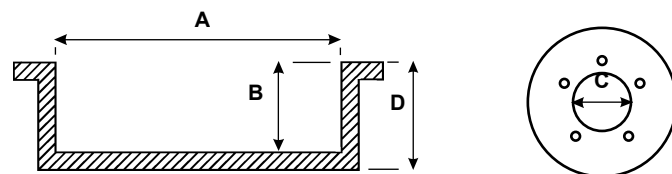
### LASER

KA, KB	1981 - 85	R	<b>1611</b>	E1394	180	36	HUB TYPE	55	181	4
KC, KE } Not Wagon KF - KH} " "	1985 - 91	R	<b>1612</b>	E1604	200	32	HUB TYPE	65.5	201	4
Wagon	1985 - 89	R	<b>1613</b>	E1637	228.6	32.5	HUB TYPE	66.5	229.5	4
KF - KH KJ, KJ Series II	1991 on	R		E1671 E1685	200	42	55	58	201	4

### METEOR

GA, GB	1981 - 85	R	<b>1611</b>	E1394	180	36	HUB TYPE	55	181	4
GC, GE	1985 - 89	R	<b>1612</b>	E1604	200	32	HUB TYPE	65.5	201	4
Wagon	1985 - 89	R	<b>1613</b>	E1637	228.6	32.5	HUB TYPE	66.5	229.5	4

# DRUM BRAKES



E = Max. Diameter

## FORD COMMERCIAL

Model	Years	F/R	Drum No.	Brake Shoe	Dia. Face A	Machine Face B	Centre Hole C	Drum Height D	Max. Diam. E	Stud Holes
-------	-------	-----	----------	------------	-------------	----------------	---------------	---------------	--------------	------------

### BRONCO

Bronco	1981 - 87	R	1620	E1323 Shoes	11.020"	2 <sup>3</sup> / <sub>4</sub> "	2 <sup>7</sup> / <sub>8</sub> "	3 <sup>5</sup> / <sub>8</sub> "	11.090"	5
					or 280	or 70	or 73	or 92	or 281.6	

### COURIER

1.8, 2.0	1979 - 84	R	1627	E1389 Shoes	260	50	93	62	261	6
2.0, 2.2, 2.6	1984 on									

### ECONOVAN / MAXI / SPECTRON

1800, 2000, 2200 Single Rear Wheel Except 1800 SWB	1/84 - on	R	1625		260	63	93	76	261.5	6
--	-----------	---	------	--	-----	----	----	----	-------	---

### F100 / F150 SERIES

F100 2WD, 4WD	79 - 12/86	R	1620	E1323 Shoes	11.020"	2 <sup>3</sup> / <sub>4</sub> "	2 <sup>7</sup> / <sub>8</sub> "	3 <sup>5</sup> / <sub>8</sub> "	11.090"	5
					or 280	or 70	or 73	or 92	or 281.6	
F150 2WD, 4WD	1987 on	R	1630	E1323	280	70	88	92	286.1	5

### F250 SERIES

F250 Not semi-floating axle	1974 - 85	R	1621	1621A <sup>9</sup> / <sub>16</sub> " Studs	12"	3"	4 <sup>11</sup> / <sub>16</sub> "	4 <sup>3</sup> / <sub>4</sub> "	12.060"	8
				(14mm holes)	or	or	or	or	or	
				1621B <sup>5</sup> / <sub>8</sub> " Studs	304.8	76	119	120	306.3	
				E1014						

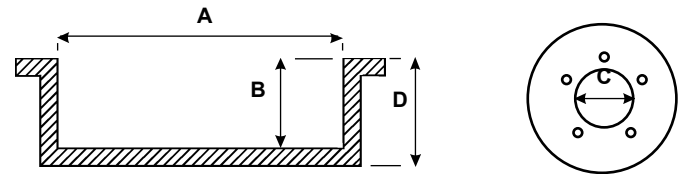
### F350 SERIES

F350 Super Cab	1974 - 79	R	1622	* Rare *	12"	3 <sup>5</sup> / <sub>8</sub> "	5 <sup>3</sup> / <sub>8</sub> "	5"	12.060"	8
F350 2WD (SRW)	1980 - 85			* Model *	or 304.8	or 92	or 136.5	or 127	or 306.3	
F350 2WD (DRW)	10/71 - 83	R	1628B	1628B <sup>5</sup> / <sub>8</sub> " Studs	12"	3 <sup>9</sup> / <sub>16</sub> "	5 <sup>5</sup> / <sub>16</sub> "	7 <sup>7</sup> / <sub>32</sub> "	12.090"	8
				E1018	or 304.8	or 90	or 135	or 180	or 307	
F350 4WD (DRW)	80 - 89	R	1628B	R1018	304.8	90	135	180	307	8

### MAVERICK

GY, KY	1988 - 93	R	1709	E1668 Shoes	295	72	111	85	296.5	6
--------	-----------	---	------	-------------	-----	----	-----	----	-------	---

# DRUM BRAKES



E = Max. Diameter

## FORD COMMERCIAL

Model	Years	F/R	Drum No.	Brake Shoe	Dia. Face A	Machine Face B	Centre Hole C	Drum Height D	Max. Diam. E	Stud Holes
-------	-------	-----	----------	------------	-------------	----------------	---------------	---------------	--------------	------------

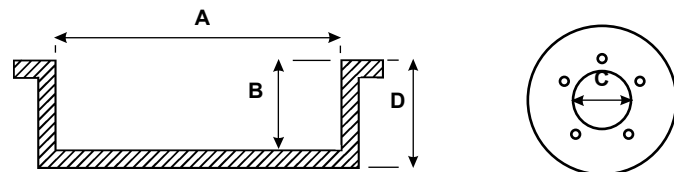
### RAIDER

Raider 2.6L 4WD	1987 - 10/98	R	<b>1625</b>	E1665	260	63	93	76	261.5	6
-----------------	--------------	---	-------------	-------	-----	----	----	----	-------	---

### TRANSIT

80-100-115-120	8/91 on	R	<b>1640</b>	E1738	254	57.5	132	96	255.5	5
100-115-120-130-150-190	8/91 on	R	<b>1641</b>	E1737	280	75.5	142.5	132.5	281.5	6

# DRUM BRAKES



E = Max. Diameter

## HOLDEN

Model	Years	F/R	Drum No.	Brake Shoe	Dia. Face A	Machine Face B	Centre Hole C	Drum Height D	Max. Diam. E	Stud Holes
-------	-------	-----	----------	------------	-------------	----------------	---------------	---------------	--------------	------------

### APOLLO

JM	3/93 on	R	<b>1603</b>	E1747	228.6	56	62	71	230	5
----	---------	---	-------------	-------	-------	----	----	----	-----	---

### ASTRA

TR	9/96 on	R	<b>1680</b>	N1710	200	53	57	67	201	4
----	---------	---	-------------	-------	-----	----	----	----	-----	---

### BARINA

MF, MH	1/89 - 94	R	<b>1608</b>	E1616	180	36	HUB TYPE	74	181	4
SB without ABS	1994 on	R	<b>1609</b>	E1705	200	35	HUB TYPE	84	201.4	4

### COMMODORE

VB, VC, VH, VK, VL, 6 cyl., 8 cyl.	1978 - 88	R	<b>1605</b>	E1385 Shoes	9.055" or 230	2 <sup>5</sup> / <sub>16</sub> " or 58	2 <sup>3</sup> / <sub>4</sub> " or 69	2 <sup>15</sup> / <sub>16</sub> " or 74.5	9.115" or 231.5	5
VC, VH, 4 cyl.	1980 - 83	R	<b>1606</b>	E1385 Shoes	9.055" or 230	2 <sup>5</sup> / <sub>16</sub> " or 58	2 <sup>3</sup> / <sub>4</sub> " or 69	2 <sup>15</sup> / <sub>16</sub> " or 74.5	9.115" or 231.5	5

### EARLY SERIES - HQ

HQ, HJ	1971 - 76	R	<b>1604</b>	E1337	10"	2"	2 <sup>13</sup> / <sub>16</sub> "	2 <sup>3</sup> / <sub>4</sub> "	10.060"	5
HX, HZ	1976 - 80			Shoes	or	or	or	or	or	
WB Utility, Panel Van	1980 - 84				254	50.8	71.5	69	255.5	

### GEMINI

TX, TC, TD	3/75 - 4/78	R	<b>1600</b>	E1174 Shoes	9" or 228.6	2 <sup>1</sup> / <sub>8</sub> " or 54	2 <sup>1</sup> / <sub>8</sub> " or 54	2 <sup>5</sup> / <sub>8</sub> " or 67	9.060" or 230.1	4
RB FWD	5/85 - 87	R	<b>1601</b>	E1601	180	42	HUB TYPE	65.5	182	4

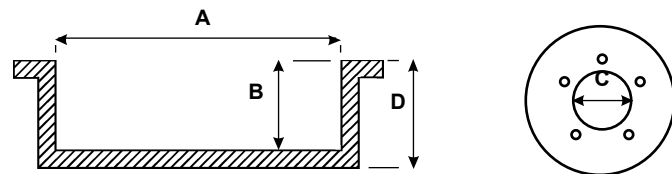
### NOVA

TX, TC, TD	3/75 - 4/78	R	<b>1600</b>	E1174	228.6	54	54	67	230.1	4
LE, LF, LG	1989 on	R	<b>1602</b>	E1379 E1490	200	55	54	65.5	201.4	4

### TORANA

LC 6 cyl.	1969 - 72	F	<b>1607</b>	No Longer	9"	2 <sup>1</sup> / <sub>8</sub> "	2 <sup>13</sup> / <sub>32</sub> "	3 <sup>5</sup> / <sub>32</sub> "	9.060"	5
LH 4, 6 cyl.	1974 - 76		<b>U/A</b>	Available in	or	or	or	or	or	
LH 4, 6 cyl.	1974 - 76			Australia	228.6	54	61	80	230.1	

# DRUM BRAKES



E = Max. Diameter

## HOLDEN COMMERCIAL

Model	Years	F/R	Drum No.	Brake Shoe	Dia. Face A	Machine Face B	Centre Hole C	Drum Height D	Max. Diam. E	Stud Holes
-------	-------	-----	----------	------------	-------------	----------------	---------------	---------------	--------------	------------

### COMBO

SB Van	2/1996 on	R	<b>1650</b>	E1732	230	59.5	57	75.5	231.2	4
--------	-----------	---	-------------	-------	-----	------	----	------	-------	---

### FRONTERA

UT 2.0 Litre	3/1995 on	R	<b>1651</b>	E1662	254	61.5	95	75	255.5	6
--------------	-----------	---	-------------	-------	-----	------	----	----	-------	---

### JACKAROO

UBS 13, 52, 16, 521,	11/81 - 91	R	<b>1652</b>	E1595	254	61	96.5	71	255.5	6
522, 17, 55				E1662						

### RODEO

All models 2WD	1980 on	R	<b>1652</b>	E1402	254	61	96.5	71	255.5	6
All models 4WD	80 - 11/96			E1595						
4WD	11/96 - 02	R	<b>1653</b>	T.B.A.	295	61	97	80	296.5	6
All models EXCEPT 4WD Hi-Ride Susp.	up to 11/02	R	<b>1654</b>		254	62.5	101	71	255.5	6
V6 4WD Hi-Ride Susp.	current	R	<b>1655</b>		295	59	101	80.6	296.5	6

### SHUTTLE

WFR	1982 - 90	R	<b>1652</b>	E1402 E1413	254	61	96.5	71	255.5	6
-----	-----------	---	-------------	----------------	-----	----	------	----	-------	---

## HONDA

Model	Years	F/R	Drum No.	Brake Shoe	Dia. Face A	Machine Face B	Centre Hole C	Drum Height D	Max. Diam. E	Stud Holes
-------	-------	-----	----------	------------	-------------	----------------	---------------	---------------	--------------	------------

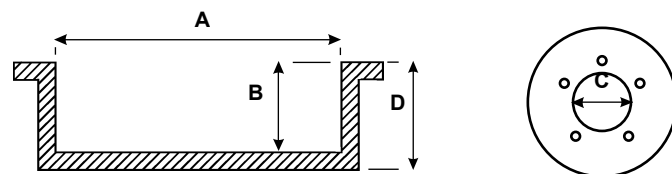
### ACCORD

SJ	1977 - 12/81	R	<b>1823</b>	E1352 E1397	180	44.5	HUB TYPE	60.5	181	4
SY, AD	1982 - 12/85	R	<b>1824</b>	E1613	200	42.5	HUB TYPE	72	201	4
CA	1/86 - 89	R	<b>1825</b>	E1614	200	42.5	61	59	201	4

### CIVIC

SB, SC, SE, SF	1973 - 79	R	<b>1820</b>	E1352 E1397	180	43	HUB TYPE	72	181	4
SL, WC	1980 - 83	R	<b>1821</b>	E1393	180	34	HUB TYPE	51	181	4
AL, ED EG, EH, EK All models	1984 - 91 1990 - 96	R	<b>1822</b>	E1610	180	37	61	62	181	4

# DRUM BRAKES



E = Max. Diameter

## HYUNDAI

Model	Years	F/R	Drum No.	Brake Shoe	Dia. Face A	Machine Face B	Centre Hole C	Drum Height D	Max. Diam. E	Stud Holes
-------	-------	-----	----------	------------	-------------	----------------	---------------	---------------	--------------	------------

### EXCEL

HA3	8/89 - 7/92	R	<b>1670</b>	E1679	180	46.5	HUB TYPE	71.5	181	4
	8/92 - 5/96	R	<b>1671</b>	E1701	180	46.5	HUB TYPE	71.5	181	4
	6/96 - on	R	<b>1672</b>		180	42	HUB TYPE	70	182	4
Excel X3 1.5L	6/96 - on	R	<b>1677</b>		180	53.25	76	58.4	182	4

### LANTRA

KF2, KF3	5/1991 on	R	<b>1673</b>	E1702 E1703	203	47	HUB TYPE	71.5	204	4
----------	-----------	---	-------------	----------------	-----	----	----------	------	-----	---

### S / COUPE

S / Coupe	5/90 - 7/92	R	<b>1670</b>	E1679	180	46.5	HUB TYPE	71.5	181	4
	7/92 on	R	<b>1671</b>	E1695 E1701	180	46.5	HUB TYPE	71.5	181	4

### SANTA FE / TRAGET

V6 DOHC	9/2000 - on	R	<b>1676</b>		253.7	69.5	76	78.5	256	5
---------	-------------	---	-------------	--	-------	------	----	------	-----	---

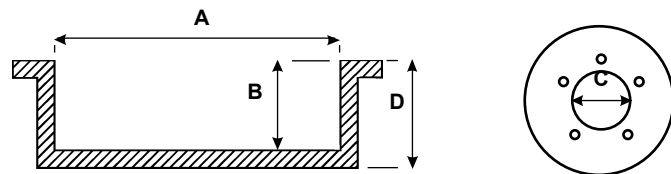
### SONATA

AF2, AF3	1988 - 94	R	<b>1674</b>	E1675	225	55	90	72	226.5	4
	1994 - 97	R	<b>1675</b>		228.6	55	90	63	230	4

## JEEP

Model	Years	F/R	Drum No.	Brake Shoe	Dia. Face A	Machine Face B	Centre Hole C	Drum Height D	Max. Diam. E	Stud Holes
CJ Series	1976 - 78	R	<b>1790</b>	E1470	279.4	80		95	281	5
	1978 - 86	R	<b>1791</b>	E1471	254	54	112	70	255.5	5
Cherokee	1979 - 91	R	<b>1792</b>	E1529	279.4	65	78	84	281	6
Cherokee 4WD	1994 - on	R	<b>1793</b>	E1715	229	77	72	90	230	5
		R	<b>1794</b>	E1716	254	75	72	102	255.5	5

# DRUM BRAKES



E = Max. Diameter

## KIA

Model	Years	F/R	Drum No.	Brake Shoe	Dia. Face A	Machine Face B	Centre Hole C	Drum Height D	Max. Diam. E	Stud Holes
Mentor	1993 - on	R	<b>1660</b>	E1753	200	42	57	58	201	4
Sportage	1995 - on	R	<b>1661</b>	E1754	250	68	43	81	251.4	5

## LANDROVER

Model	Years	F/R	Drum No.	Brake Shoe	Dia. Face A	Machine Face B	Centre Hole C	Drum Height D	Max. Diam. E	Stud Holes
-------	-------	-----	----------	------------	-------------	----------------	---------------	---------------	--------------	------------

### DEFENDER

110 Series, 130 Series	1990 on	R	<b>1751</b>		279.4	68	114	88	281	5
------------------------	---------	---	-------------	--	-------	----	-----	----	-----	---

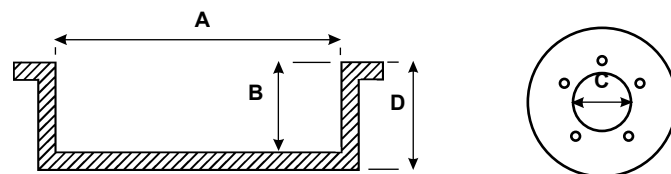
### LANDROVER

109 Series 2.5L	1971 - 85	F & R	<b>1751</b>	E1420 E1092	279.4	68	114	88	281	5
109 Series 2.6L - 14.5mm Stud Holes	1968 - 81	R	<b>1750</b>		279.4	68	114	88	281	5
109 Series 2.6L, 3.5 V8 110 Series 2.25, 2.5, 3.5 L	1971 - 85 1970 - 90	R	<b>1751</b>		279.4	68	114	88	281	5

## LEYLAND

Model	Years	F/R	Drum No.	Brake Shoe	Dia. Face A	Machine Face B	Centre Hole C	Drum Height D	Max. Diam. E	Stud Holes
Mini Van Mini Moke	1964 - 79	F R	<b>1810</b>	E1332 E1333	177.8	47.5	74	60	179.3	4
Cooper	1962 - 65	R	<b>1810</b>	E1332	177.8	47.5	74	60	179.3	4
Copper S, Clubman GT	1965 - 71	R	<b>1811</b>	E1332 E1333	177.8	47.5	74	83	179.3	4

# DRUM BRAKES



E = Max. Diameter

## MAZDA

Model	Years	F/R	Drum No.	Brake Shoe	Dia. Face A	Machine Face B	Centre Hole C	Drum Height D	Max. Diam. E	Stud Holes
323 FWD 1.5, 1.3 BD 103, 51, EM 355	1981 - 85	R	<b>1611</b>	E1394 Shoes	180	36	HUB TYPE	55	181	4
323 FWD	1985 - 89	R	<b>1612</b>	E1604	200	32	HUB TYPE	65.5	201.4	4
323 FWD Wagon	1985 - 89	R	<b>1613</b>	1637	228.6	32.5	HUB TYPE	66.5	229.5	4
626 RWD 929	1978 - 82 1978 - 80	R	<b>1614</b>	E1348 E1408	228.5	50	NO HOLE	62	229.6	4

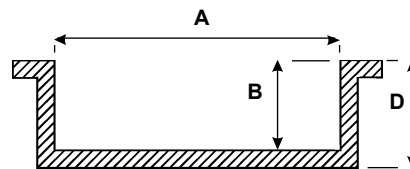
## MAZDA COMMERCIAL

Model	Years	F/R	Drum No.	Brake Shoe	Dia. Face A	Machine Face B	Centre Hole C	Drum Height D	Max. Diam. E	Stud Holes
E1600, E1800 Single Rear Wheel E2000, E2200 Except Wagon B2000, B2200, B2600	1983 - 11/86	R	<b>1625</b>	E1587	260	63	93	76	261.5	6
B1800, B2000	1982 - 84	R	<b>1627</b>	E1389 E1411	260	50	93	62	261	6

## MITSUBISHI

Model	Years	F/R	Drum No.	Brake Shoe	Dia. Face A	Machine Face B	Centre Hole C	Drum Height D	Max. Diam. E	Stud Holes
Sigma GE, GH, GJ, GK, GN	1978 - 87	R	<b>1700</b>	E1384 E1384i	228.6	54	68	67	230	4
Sigma GE, GH, GJ, GK, GN With Jap Diff	1978 - 87	R	<b>1700A</b>	E1384 E1384i	229	51	68	62.5	230	4
Lancer CA, CB	1988 - 93	R	<b>1725</b>	E1677 E1681	180	39	HUB TYPE	71.5	181	4
Lancer CC	10/92 - on	R	<b>1726</b>	E1699	203	42	64	64.5	204.2	4
Lancer CC, CE Mirage CE 1500, 1800	10/92 - on	R	<b>1727</b>	E1681	180	46	64	66	181	4
Pajero IO Series	1999 - on	R	<b>1728</b>		229	38.5	90	59.5	230.6	5

# DRUM BRAKES



E = Max. Diameter

## MITSUBISHI COMMERCIAL

Model	Years	F/R	Drum No.	Brake Shoe	Dia. Face A	Machine Face B	Centre Hole C	Drum Height D	Max. Diam. E	Stud Holes
-------	-------	-----	----------	------------	-------------	----------------	---------------	---------------	--------------	------------

### L200

Petrol	1980 - 85	R	<b>1780</b>	E1444	241	58	93.5	80.5	242.7	6
Diesel	1982 - 85	R	<b>1781</b>	E1594	254	62	93.5	83	255.4	6

### L300

SB, SC, SD, SE All Models AWD	1982 - 9/86 1983 on	R	<b>1781</b>	E1594 E1593	254	62	93.5	83	255.4	6
SF, SG, SH WA 2.0 Litre	10/86 on 1994 on	R	<b>1782</b>	E1594 -	254	62	75	70.5	255.4	5
SA WA 2.4 Litre	1980 - 82 1994 on	R	<b>1783</b> <b>1784</b>							
WA 2.4 Litre V6	1994 on	R	<b>1785</b>							

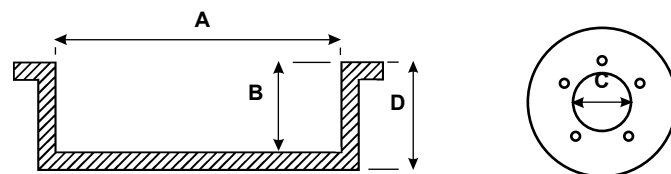
### PAJERO

NA, NB, NC, ND, NE, NF, NG	1/83 - 5/91	R	<b>1781</b>	E1594	254	62	93.5	83	255.4	6
NH	1991 on	R	<b>1786</b>		254	62	83	93.5	256	6
10 Series	1999 - on	R	<b>1728</b>		229	38.5	90	59.5	230.6	5

### TRITON

ME, MF, MG, MH, MJ, 2WD ME, MF, MG, MH, MJ 4WD MK 4WD	10/86 - 12/96 1997 on	R	<b>1781</b>	E1594	254	62	93.5	83	255.4	6
---	--------------------------	---	-------------	-------	-----	----	------	----	-------	---

# DRUM BRAKES



E = Max. Diameter

## NISSAN

Model	Years	F/R	Drum No.	Brake Shoe	Dia. Face A	Machine Face B	Centre Hole C	Drum Height D	Max. Diam. E	Stud Holes
-------	-------	-----	----------	------------	-------------	----------------	---------------	---------------	--------------	------------

### 1600

510 Sedan + Wagon	1968 - 73	R	<b>1700</b>	E1339	228.6	54	68	67	230	4
510 Sedan + Wagon With Jap Diff	1968 - 73	R	<b>1700A</b>	E1339	229	51	68	62.5	230	4

### 180B

610 Sedan + Wagon	1972 - 77	R	<b>1700</b>	E1339	228.6	54	68	67	230	4
610 Sedan + Wagon With Jap Diff	1972 - 77	R	<b>1700A</b>	E1339	229	51	68	62.5	230	4

### 200B

810	10/77 - 81	R	<b>1700</b>	E1344 E1386	228.6	54	68	67	230	4
810 With Jap Diff	10/77 - 81	R	<b>1700A</b>	E1344 E1386	229	51	68	62.5	230	4

### BLUEBIRD

910 Sedan + Wagon	1981 on	R	<b>1700</b>	E1384 E1384/3	228.6	54	68	67	230	4
910 Sedan + Wagon With Jap Diff	1981 - on	R	<b>1700A</b>	E1384 E1384/3	229	51	68	62.5	230	4

### GAZELLE

S12	1/84 - 4/85	R	<b>1700</b>	E1386	229	54	68	67	230	4
-----	-------------	---	-------------	-------	-----	----	----	----	-----	---

### PINTARA

U12	11/89 - 10/92	R	<b>1700</b>	E1656	229	54	68	67	229.5	4
N14 N15	10/91 - 9/95 10/95 on	R	<b>1701</b>	E1697	180	37.5	68	57.5	181	4

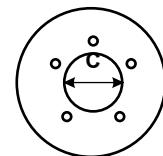
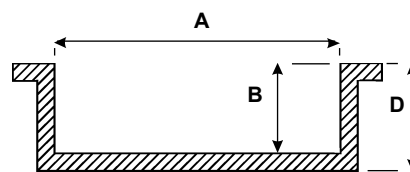
### SKYLINE

C120 R30	3/78 - 2/81 3/81 - 6/86	R	<b>1700</b>	E1386	229	54	68	67	229.5	4
-------------	----------------------------	---	-------------	-------	-----	----	----	----	-------	---

### STANZA

A10 Coupe, Sedan	1979 - 83	R	<b>1700</b>	E1384 E1386	228.6	54	68	67	230	4
A10 Coupe, Sedan With Jap Diff	1981 - on	R	<b>1700A</b>	E1384 E1386	229	51	68	62.5	230	4

# DRUM BRAKES



E = Max. Diameter

## NISSAN COMMERCIAL

Model	Years	F/R	Drum No.	Brake Shoe	Dia. Face A	Machine Face B	Centre Hole C	Drum Height D	Max. Diam. E	Stud Holes
-------	-------	-----	----------	------------	-------------	----------------	---------------	---------------	--------------	------------

### 520 / 620 / 720

720 2WD	1979 - 12/82	R	<b>1707</b>	E1075	254	51	90	56	255.5	6
720 4WD	9/79 - 3/83			E1400						
720 2WD	1983 - 8/85	R	<b>1708</b>	E1584	254	55	90	69	255.5	6
720 4WD										

### NAVARA

D21 2WD	9/85 - 8/89	R	<b>1706</b>	E1584 E1612	254	56	101	80.5	255.6	6
D21 4WD	8/89 - 97	R	<b>1704</b>		295	69	100.5	88.5	297	6
D21 2WD	8/89 - 97	R	<b>1716</b>	E1584	260	63.5	100.5	73	262	6
D22 2WD, 4WD	2/97 - on	R	<b>1704</b>	N1726	295	69	100.5	88.5	297	5

### NOMAD

GC22 Van	1986 - 93	R	<b>1700</b>		228.6	54	68	67	229.5	4
----------	-----------	---	-------------	--	-------	----	----	----	-------	---

### PATHFINDER

WD21 (Z24)	8/89 - 7/92	R	<b>1702</b>	E1652	260	63.5	100.5	73	262	6
VG30	7/92 on									
VG33 (R50)	9/95 on	R	<b>1703</b>		295	67.7	100.4	88.5	296.5	6

### PATROL

MQ Series	1/81 - 12/87	R	<b>1705</b>	E1404 E1597	270	65.5	102	74	271.5	6
GQ Series Wagon	1988 on	R	<b>1709</b>	E1668	295	75	111	85	296.5	6

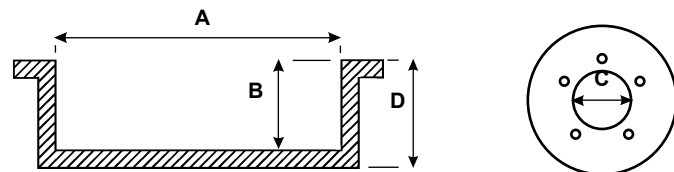
### URVAN

E23 Diesel Some	85 - on	R	<b>1708</b>	N1584	254	55	90	69	255.5	6
E23	11/80 - 86	R	<b>1715</b>	E1075 E1400	254	52	90	59.5	255.5	6
E24	3/87 - 93	R	<b>1716</b>	E1584	260	63.5	100.5	73	262	6

### UTE

XFN, DX, ST	1989 - 91	R	<b>1610</b>	E1271	254	55	70	68.5	255.5	5
-------------	-----------	---	-------------	-------	-----	----	----	------	-------	---

# DRUM BRAKES



E = Max. Diameter

## PORSCHE

Model	Years	F/R	Drum No.	Brake Shoe	Dia. Face A	Machine Face B	Centre Hole C	Drum Height D	Max. Diam. E	Stud Holes
924	1977 - 82	R	<b>1850</b>		230	50.5	AXLE SPLIN	63.2	232	4

## ROVER

Model	Years	F/R	Drum No.	Brake Shoe	Dia. Face A	Machine Face B	Centre Hole C	Drum Height D	Max. Diam. E	Stud Holes
-------	-------	-----	----------	------------	-------------	----------------	---------------	---------------	--------------	------------

### QUINTET

All Models	1983 - on	R	<b>1821</b>	E1393	180	34	HUB	51	181	4
------------	-----------	---	-------------	-------	-----	----	-----	----	-----	---

## SUZUKI

Model	Years	F/R	Drum No.	Brake Shoe	Dia. Face A	Machine Face B	Centre Hole C	Drum Height D	Max. Diam. E	Stud Holes
-------	-------	-----	----------	------------	-------------	----------------	---------------	---------------	--------------	------------

### SIERRA

SJ40/410/413/SJ 50 Series 1-5	1983 - 86	R	<b>1830</b>	E1539, E1627	228.6	49	57	61	230	5
SJ50 Series 6+7 SJ 413 Series 8+9	1996 on	R	<b>1831</b>	E1628	220	52	57	63	222	5

### SWIFT

SA310, 413	1985 - 88	R	<b>1832</b>	E1616	180	43	HUB TYPE	63	182	4
SF310 / 413 3+5 Door	1989 - 94	R	<b>1833</b>		180	43	HUB TYPE	63	182	4
SF413 4 Door / SF 416	1989 - 98	R	<b>1834</b>		200	40	64	56	202	4

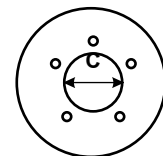
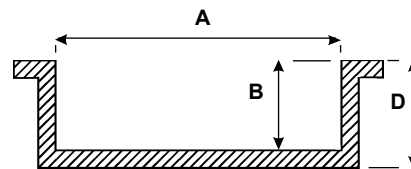
### VITARA

2 Door Series 1, 2, 3	1988 - 97	R	<b>1835</b>	E1691	220	42	50	61	222	5
4 Door Series 1, 2, 3	1988 - 97	R	<b>1836</b>	E1758	254	53	50	66	255.6	5
2 Door Series 4	1991 - 98	R	<b>1837</b>	E1683	220	41	100	61	221.5	5
4 Door Series 4	1991 - 98	R	<b>1838</b>	E1735	254	54	100	66	255.6	5
Grande	1998 on	R	<b>1839</b>		220.6	53.3	100	64.9	222	5

### X90

X90	1997 on	R	<b>1837</b>	E1683.	220	41	100	61	221.5	5
-----	---------	---	-------------	--------	-----	----	-----	----	-------	---

# DRUM BRAKES



E = Max. Diameter

## TOYOTA

Model	Years	F/R	Drum No.	Brake Shoe	Dia. Face A	Machine Face B	Centre Hole C	Drum Height D	Max. Diam. E	Stud Holes
-------	-------	-----	----------	------------	-------------	----------------	---------------	---------------	--------------	------------

### CAMRY

SDV10 4 Cyl.	1992 on	R	<b>1603</b>	E1747	228.6	56	62	71	230	5
--------------	---------	---	-------------	-------	-------	----	----	----	-----	---

### CELICA

TA22, TA23 RA23, RA28 RA40 Coupe, Liftback RA60 Coupe, Liftback	1971 - 85	R	<b>1735</b>	E1358 Shoes	228.6	54	60	71	230.6	4
ST162	1986 - 89	R	<b>1602</b>	E1490	200	55	54	65.5	201.4	4

### COROLLA

KE30, KE35, KE38, KE55, Local Brakes KE70V Panel Van 1300 AE 80	1974 - 84	R	<b>1735</b>	E1356 Shoes	228.6	54	60	71	230.6	4
KE20, KE25, KE26V KE30, KE35, KE36, KE38, KE50, KE55 KE70 Sedan, Wagon AE71 Sedan, Wagon	1970 - 84  1981 - 84	R	<b>1737</b>	E1189 Shoes	200	46	60	63	202	4
AE82 SOHC	1985 - 88	R	<b>1602</b>	E1379	200	55	54	65.5	201.4	4
AE90, 92 SOHC	1989 - 94	R	<b>1602</b>	E1490						
AE95 4WD	1988 - 94	R	<b>1665</b>	E1591	200	59	54	70.5	201.4	4

### CORONA

RT80, RT81 with Drum Front/Rear	1970 - 73	R	<b>1735</b>	E1062 E1182	228.6	54	60	71	230.6	4
RT104 SE, CS Sedan RT118 SE Station Wagon XT130, XT131 RT132, RT133 Liftback ST141 Sedan, Wagon	1973 - 83  1983 - 86	R	<b>1735</b>	E1358 Shoes	228.6	59	60	71	230.6	4

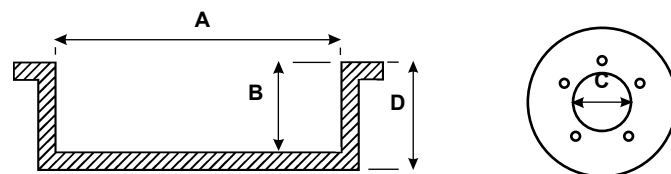
### CRESSIDA

MX32, MX36 MX62 Sedan, Wagon	1976 - 84	R	<b>1735</b>	E1358 Shoes	228.6	54	60	71	230.6	4
---------------------------------	-----------	---	-------------	----------------	-------	----	----	----	-------	---

### PASEO

EL54	1995 on	R	<b>1666</b>		180	34.5	HUB TYPE	80.5	181.4	4
------	---------	---	-------------	--	-----	------	-------------	------	-------	---

# DRUM BRAKES



E = Max. Diameter

## TOYOTA

Model	Years	F/R	Drum No.	Brake Shoe	Dia. Face A	Machine Face B	Centre Hole C	Drum Height D	Max. Diam. E	Stud Holes
-------	-------	-----	----------	------------	-------------	----------------	---------------	---------------	--------------	------------

### STARLET

EP91	96 - on	R	<b>1666</b>		180	34.5	HUB TYPE	80.5	181.4	4
------	---------	---	-------------	--	-----	------	----------	------	-------	---

### T-18

TE72 1800 Liftback	1979 - 83	R	<b>1735</b>	E1358	228.6	54	60	71	230.6	4
--------------------	-----------	---	-------------	-------	-------	----	----	----	-------	---

## TOYOTA COMMERCIAL

Model	Years	F/R	Drum No.	Brake Shoe	Dia. Face A	Machine Face B	Centre Hole C	Drum Height D	Max. Diam. E	Stud Holes
-------	-------	-----	----------	------------	-------------	----------------	---------------	---------------	--------------	------------

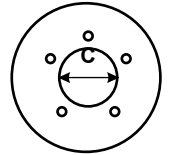
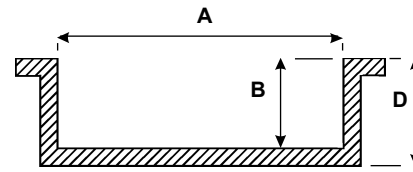
### DYNA

YH81, LH 80 100 Series	1985 on	R	<b>1732</b>	E1371	254	67	67	78	256	5
------------------------	---------	---	-------------	-------	-----	----	----	----	-----	---

### HI-ACE

RH11	1967 - 74	F & R	<b>1731</b>	E1025 E1028	230	58	67	70	232	5
RH11	1974 - 75	F & R	<b>1748</b>	E1493 E1028	230	73	67	62.5	232	5
RH11 RH11, 20, 22, 32, 42 LH20, 30 RH11, LH 11 YH50, 60, 70 Series LH50, 60, 70 Series	1975 - 81    1982 - 87	R	<b>1732</b>	E1371	254	67	67	78	256	5
RH11 RH11, 20, 22, 32, 42 LH20, 30	1975 - 81	F	<b>1733</b>	E1388	254	64	67	70	256	5
YH53, 63, 73 LH51, 61, 71	1987 - 89	R	<b>1733</b>	E1405						
YH56, 66 LH 56, 66	1986 - 87	R	<b>1744</b>	E1647	295	66	106	83	297	6
RZH103, 113, 125 LH103, 113, 125	1989 on	R	<b>1747</b>	E1678	270	66	67	81	272	5
SBV LXH12, 22 RCH12, 22	8/1995 - on	R	<b>1761</b>	E171A	270	66	69	84	272	6

# DRUM BRAKES



## TOYOTA COMMERCIAL - Continued

E = Max. Diameter

Model	Years	F/R	Drum No.	Brake Shoe	Dia. Face A	Machine Face B	Centre Hole C	Drum Height D	Max. Diam. E	Stud Holes
-------	-------	-----	----------	------------	-------------	----------------	---------------	---------------	--------------	------------

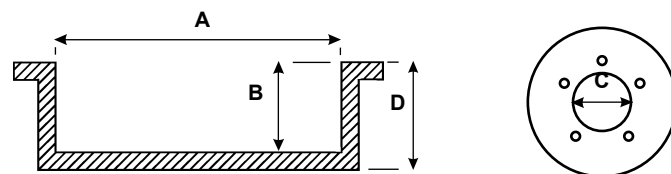
### HI-LUX 2WD # = RN31, RN34

RN10	1968 - 72	F & R	<b>1731</b>	E1025 E1028	230	58	67	70	232	5
RN10, 20	1972 - 78	F & R	<b>1732</b>	E1375 E1371	254	67	67	78	256	5
RN30, 31, 40, 41 LN30, 40 RN5#, LN5#, YN5# LN8#, 9#, YN8#, 9# RN85	1978 - 83 1983 - 89 1988 - 97	R	<b>1732</b>	E1371						
RN41, RMSQ SR5	1978 - 83	R	<b>1733</b>	E1396	254	64	67	70	256	5
YN57, SR5 RN90 LN14#, 15# RZN14#, RZN154#	1983 - 89 1988 - 91 1997 on	R	<b>1738</b>	E1396	254	62	67	72	256	5
RN30, 40 LN 30, 40	1978 - 83	F	<b>1749</b>	E1388	254	57	67	70	256	5

### HI-LUX 4WD / 4 RUNNER

RN36, 46 LN 36, 46 YN60, 62, 65, 67 LN65	1979 - 83 1983 - 89	R R	<b>1739</b>	E1371	254	66	91	78	256	6
RN105, LN 106, YN 106	1988 - 97	R	<b>1743</b>	E1660	295	66	91	83	297	6
RN61, LN 61, YN 63 RN106, 110, 130, LN107, 111, 130 YN130, VZN 130	1985 - 89 1988 - 97	R	<b>1744</b>	E1647	295	66	106	83	297	6

# DRUM BRAKES



E = Max. Diameter

## TOYOTA COMMERCIAL - Continued

Model	Years	F/R	Drum No.	Brake Shoe	Dia. Face A	Machine Face B	Centre Hole C	Drum Height D	Max. Diam. E	Stud Holes
-------	-------	-----	----------	------------	-------------	----------------	---------------	---------------	--------------	------------

### LANDCRUISER

BJ40	1979 - 81	F	<b>1730</b>	E1414	295	75	106	81	297	6
		R	<b>1740</b>	E1083	290	64	106	84	292	6
BJ42	1980 - 84	R	<b>1730</b>	E1414	295	75	106	81	297	6
BJ70, 73	1984 - 90									
FJ40, 45, 55	1969 - 75	F & R	<b>1740</b>	E1083	290	64	106	84	292	6
FJ40, 45, 50	1975 - 80	F	<b>1730</b>	E1414	295	75	106	81	297	6
FJ40, 55	1975 - 80	R	<b>1740</b>	E1083	290	64	106	84	292	6
FJ45	1975 - 84	R	<b>1730</b>	E1414	295	75	106	81	297	6
FJ60, 62	1984 - 90	R								
FJ70, 73, 75	1984 - 90	R								
HJ45	1979 - 80	F & R								
HJ45, 47	1980 - 84	R	<b>1730</b>	E1414	295	75	106	81	297	6
HJ 60, 61	1980 - 90									
HJ75	1984 - 90									
FJ, FZJ, HDJ80, HZJ80	1990 on	R	<b>1745</b>		295	68	106	81	297	6
FJ, FZJ70, 73, 75	1990 - 92	R	<b>1746</b>		295	75	106	81	297	6
HJ, HZJ70, 75										
KZJ, PZJ, 70										
HDJ80, HZJ80, FZJ80 (full floating axle)	8/1992 - on	R	<b>1755</b>		295	102	106	109	297	6

### LITE-ACE

KM20, CM20	1979 - 85	F	<b>1734</b>	E1358	228.6	58	60	75	230.6	4
KM36, YM30, 35CM, 36	1986 - 92	R	<b>1735</b>	E1358	228.6	54	60	71	230.6	4

### PRADO

KZJ9#, LZJ9#, RZJ9#	1996 on	R	<b>1744</b>	E1647	295	66	106	83	297	6
---------------------	---------	---	-------------	-------	-----	----	-----	----	-----	---

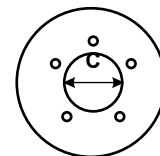
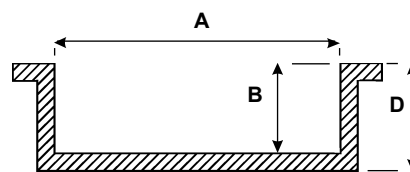
### RAV4

SXA10	4/94	R	<b>1741</b>	E1747	254	63	67	74	256	5
SXA1#	4/94 - 8/95	R	<b>1752</b>		228.5	66.25	62	70	230.5	5
ACA20, ACA21, CLA2#, 2CA2#	7/2003 - on	R	<b>1753</b>		228.5	58.75	61.75	64	230.5	5

### SPACIA

CR27, KR2	4/92 on	R	<b>1735</b>		228.6	54	60	71	230.6	4
-----------	---------	---	-------------	--	-------	----	----	----	-------	---

# DRUM BRAKES



E = Max. Diameter

## TOYOTA COMMERCIAL - Continued

Model	Years	F/R	Drum No.	Brake Shoe	Dia. Face A	Machine Face B	Centre Hole C	Drum Height D	Max. Diam. E	Stud Holes
-------	-------	-----	----------	------------	-------------	----------------	---------------	---------------	--------------	------------

### TARAGO

YR 20, 21, 22, CR 21	1982 - 90	R	<b>1736</b>	E1492	254	61	60	74	256	4
TCR10, 20	1990, 96	R	<b>1742</b>	E1492	254	62.5	60	72	256	5

### TERCEL

AL25 4WD	10/82 - 4/88	R	<b>1665</b>		200	59	54	70.5	201.4	4
----------	--------------	---	-------------	--	-----	----	----	------	-------	---

### TOWNACE

CR27, KR2	4/92 on	R	<b>1735</b>		228.6	54	60	71	230.6	4
YR22, 39			<b>1736</b>	N1396	254	61	60	74	256	4
SBV KR42, SR40	11/96 - on	R	<b>1736</b>	N1396	254	61	60	74	256	4

# VOLKSWAGEN

Model	Years	F/R	Drum No.	Brake Shoe	Dia. Face A	Machine Face B	Centre Hole C	Drum Height D	Max. Diam. E	Stud Holes
-------	-------	-----	----------	------------	-------------	----------------	---------------	---------------	--------------	------------

### SYNCHRO

4WD 2.4L Diesel	89 on	R	<b>1744</b>		295	67	106	83	297	6
-----------------	-------	---	-------------	--	-----	----	-----	----	-----	---